

A modern interior scene featuring a black leather chair with a chrome frame, a small round table with a drink, and a textured floor. The chair is the central focus, with its sleek lines and high-quality materials. To the left, a small round table holds a glass of coffee and some dried flowers. The floor is made of large, textured tiles that add to the contemporary aesthetic. The overall lighting is soft and even, highlighting the textures and materials.

Boundary Metallics | LVT

Interface®

## Boundary™ Metallics

---

Boundary Metallics, our exclusive luxury vinyl tile design, presents a new point of view for the floor, inspired by man-made, industrial materials with the patina of nature and time. Infused with warm and cool metallics, light dances across the floor activating its typically static surface. Through pigment, organic pattern and texture, these Skinny Planks™ prove a more forgiving finish to scuffs and marks.

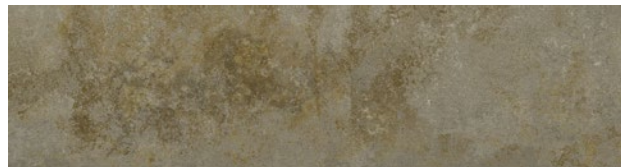
+Positive spaces are created when we install Boundary Metallics and Interface carpet tiles side by side to create an integrated floor of open and sheltered areas. Our system of hard and soft tiles in Skinny Planks and squares allow you to move from surface to surface without the need for transition strips. And similar backing systems mean the unmatched ease of a glue-free TacTiles™ installation system for both.

And, of course, we've designed it with attention to our continued commitment to minimize environmental footprint and the ability to feed our recycling program, ReEntry®.

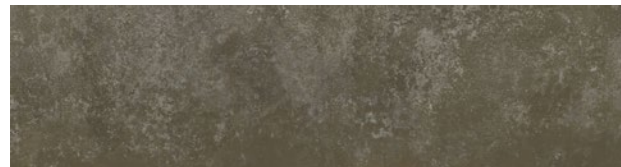




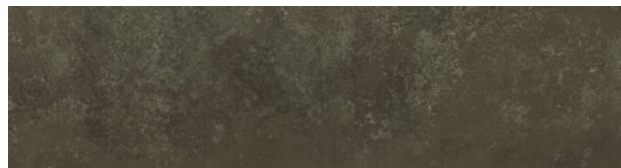
Boundary Metallics | Colourline



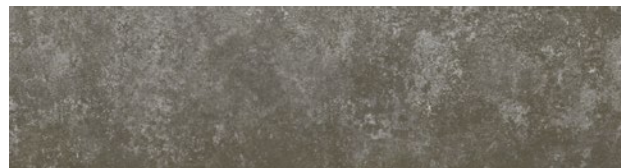
A006-01 Daylight



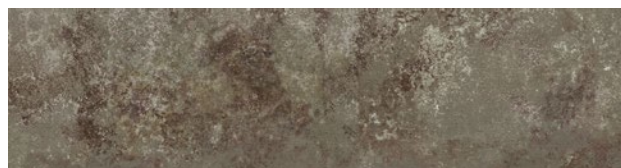
A006-07 Desert Shadow



A006-08 Evening Dusk



A006-09 Morning Mist



A006-05 Fawn



A006-06 Eclipse

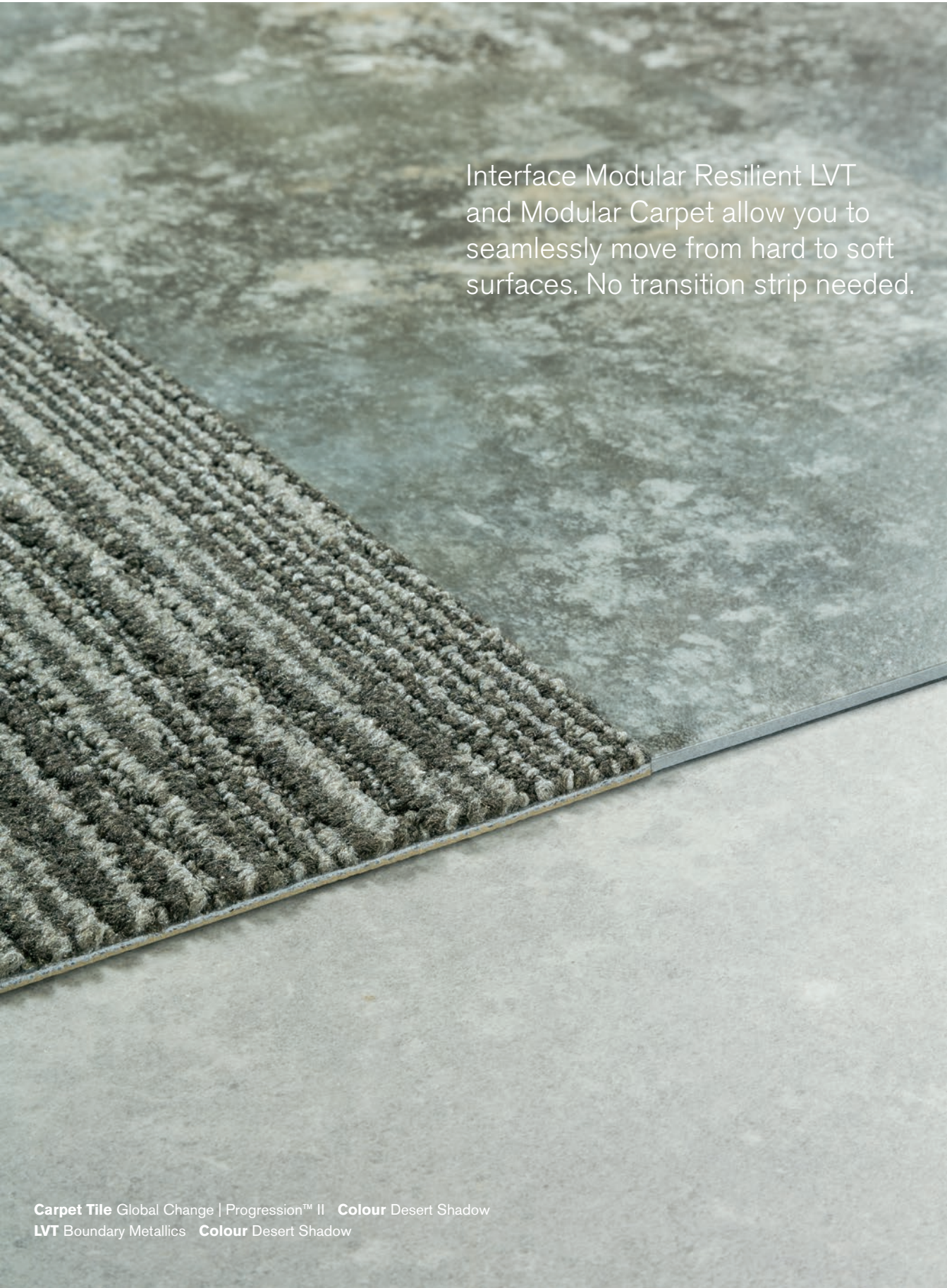




LVT Boundary Metallics Colour Fawn Installed Ashlar  
Carpet Tile Global Change | Raku Colour Fawn Installed Non Directional



LVT Boundary Metallics Colour Daylight Installed Ashlar  
Carpet Tile Global Change | Ground Colour Morning Mist Installed Quarter turn



Interface Modular Resilient LVT and Modular Carpet allow you to seamlessly move from hard to soft surfaces. No transition strip needed.

**Carpet Tile** Global Change | Progression™ II **Colour** Desert Shadow  
**LVT** Boundary Metallics **Colour** Desert Shadow

Why Our Modular Resilient LVT?

## Integrated System.

*Say goodbye to transition strips and doubling up.* Our modular resilient floorings are made to work as a system with our modular carpet. The compatible size and height of our products allows you to integrate modular carpet for an inset rug or an adjacent field – no transition strip required. You'll avoid doubling up on materials and save money.

## Real Flexibility.

*Create a unique look that lasts.* Interface modular resilient LVT makes it easy to extend the life of your floor. From simple maintenance like damp mopping to selectively replacing damaged tiles, your flooring investment will stand the test of time - beautifully and effortlessly.

## Circular System.

*Keep flooring out of the landfill.* Our modular resilient LVT is produced with a controlled material stream so it can be reclaimed and recycled into our GlasBac®RE recycled content backing through our ReEntry program.

## Noise Reduction.

*Silence distractions.* Interface is helping create +Positive spaces with our LVT with Sound Choice™ backing. It's Quiet Mark™ certified for its superior noise reduction qualities, offering you best-in-class performance for reduced impact sound and floor to floor sound transmission.







LVT Boundary Metallics **Colours** Desert Shadow, Evening Dusk  
**Installed** Ashlar

## Specifications

### Boundary Metallics

Product Number	A006
Product Construction	High Performance Luxury Vinyl Plank
Wear Layer Thickness	0.55 mm
Total Thickness (Metric)	4.5 mm
Classification	EN 651 Class 33 (heavy contract) EN 651 Class 42 (light industrial general)
Acoustic Impact Noise Reduction	ISO 140.8 $\Delta L_w = 16\text{dB}$
Finish	CERAMOR(tm) UV Stabilized Ceramic Bead Coating
Nominal Dimensions	25cm x 100cm

### Performance Specifications

Critical Heat Flux	AS ISO 9239-1	>7kW/m <sup>2</sup>
Smoke Rate	AS ISO 9239-1	<750%.min
Size, Tolerance	ISO 24342	>400 mm < 0.35 mm
	ISO 24342	<400 mm < 0.25 mm
Dimensional Stability	ISO 23999	<0.25%
	ISO 24346	Average value + 0.20mm
Resistance to Light	ISO 105-B02	≥6
Resistance to Heat	ASTM F1514	$\Delta E < 8$ avg Max
Resistance to Chemicals	EN-ISO 26987	Pass
Reaction to Fire	EN ISO 13501-1	Class BFI-S1
VOC Test	ISO 10580	Pass
Flexibility	ISO 24344 Method A	Pass
Static Load	ASTM F970	≤0.005" with 1500 psi
Castor chair	ISO 4918	Pass
Thermal Conductivity	EN 12667	0.16 W/mK
Static Electrical	EN 1815	<2kV
Slip Resistance	AS 4586:2014	R9

### Environmental Specifications

Ingredients and Life Cycle Impacts	EPD for LVT
Sustainability Assessment	NSF/ANSI 332, Meets Certification Guidelines
LEED v4	Contributes to IEQ: Low Emitting Materials; M&R: EPD and EPR
End of Life	Fully Recyclable to carpet tile Backing Recycling

### Technical Information

Installation	See Interface LVT Installation Guidelines online
Maintenance	See Interface LVT Maintenance Guidelines online
Reclamation	View details on our ReEntry® Program
Warranty	15 Year Standard LVT Product Warranty
Installation Methods	Ashlar, Herringbone



All product specifications reflect averages derived from product sample testing, are subject to normal manufacturing and testing tolerances and inherent pattern variances, and may be changed without notice. For more information about these and other important attributes of the product(s) described herein, including recycled content and product warranty information please see our full LVT product disclaimer.



As part of Interface's Mission Zero promise to eliminate any negative impact on the environment by 2020, we always consider the environment impact of every creative, manufacturing and building decision. This sample book is printed on recycled paper and with soy based ink. Twenty four virgin trees were saved from our use of 1725kg of recycled paper in the production of 5000 sample books. Energy intensity also decreased and greenhouse gases were reduced. The other reductions came from waste water and solid waste. Through our sample reclamation program, we help keep sample materials out of landfill by re-using them until it is time to recycle these sample materials.

**[www.interface.com](http://www.interface.com)**

**South East Asia**

Interface Asia  
tel: 65-6478 1510  
[www.interface.com](http://www.interface.com)

**South Korea**

tel. 82-2-555 1734  
[www.interface.com](http://www.interface.com)

**Japan**

Interface Japan  
tel: 81-3-5733 5211  
[www.interface.com](http://www.interface.com)

**India**

Interface India  
tel: 91 80 30589350  
[www.interface.com](http://www.interface.com)

**Beijing Studio**

Interface China  
tel: 86-10-6590 7810  
[www.interface.com.cn](http://www.interface.com.cn)

**Hongkong Studio**

Interface China  
tel: 852-2802 0838  
[www.interface.com.cn](http://www.interface.com.cn)

**Shanghai Studio**

Interface China  
tel: 86-21-6340 3868  
[www.interface.com.cn](http://www.interface.com.cn)

**Australia**

Interface Australia  
local toll free: 1800 008 101  
[www.interface.com](http://www.interface.com)

12/2017  
SF0099T0



**Mission Zero:**  
our promise to eliminate any  
negative impact our company  
may have on the environment  
by the year 2020.